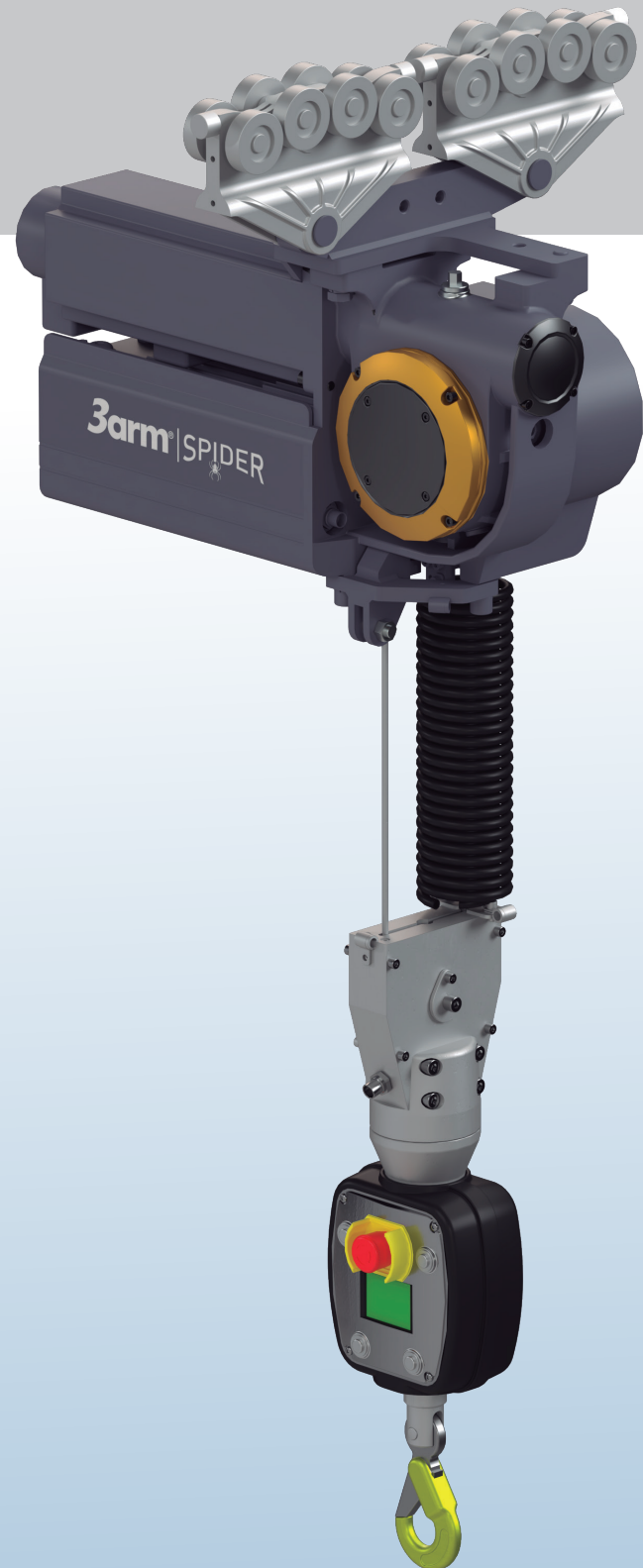


# SMART LIFT SPIDER 600R

REACH  
 VERT. 1250 mm  
 HORZ. \*rail lenght  
 MAX. up to 600 kg



The 3arm Smart Lift Spider 600R is an electronic rope balancer designed to be mounted on rail systems for manually handling loads up to 600kg

The 3arm Spider features make this rope balancer unique.

- **MEASURING CELL**

The application of a measuring cell leads to an optimum running performance. Self-balancing and the weight of the load is displayed exactly.

- **ENDLESS ROTATION**

Rotary units are installed on the operating handle and the column. This allows endless turning and movement of the load.

- **EASY PROGRAMMING**

The device allows to easily set up different speeds as well as reducing the speed at the pick-up and release points.

- **RAIL SYSTEMS**

The Spider can be mounted to any brand rail system due to a wide range of trolley adapting plates.

- **CUSTOMIZABLE**

Flexible software to customize the device with different end effectors or other input output application needs

# SPIDER 600 R

## TECHNICAL DATA

<b>Load Capacity</b>	0-600 kg
<b>Power Supply</b>	230 V
<b>Lifting speed</b>	Up to 163mm/s . Adjustable in different heights. Pick up/release point.
<b>Cable Stroke</b>	1.25m
<b>Controls</b>	Handle mode and load mode

